

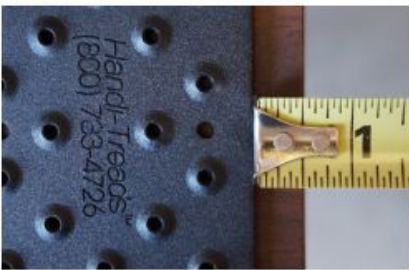


# Handi-Treads Wood Installation

## What you will need:

- Your Handi-Tread(s) and included screws
- A power drill or a screwdriver
- A tape measure

**Step 1.** Align your Handi-Tread in the desired stair position. If you are installing a tread, set it back roughly ½" from the edge. If you are installing a nosing, make sure it fits snugly at the edge of your stair.



**Step 2.** Starting with the middle screw holes, drill your screws into the stair working your way out from the center. Make sure that you are drilling perpendicular to the surface and that you use all of the screw holes provided. Installation is complete once all screws have been drilled into place.

**NOTE: that the screw holes are not raised;  
DO NOT use the raised traction bumps for your screw placement!**

